






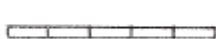






Map #1: RM of Willner Zoning Bylaw Map

Agricultural District	
High Density Residential District	
Country Residential District	
Highway Commercial District	

	Divided Provincial Highway
	Provincial Highway

Municipal Road System

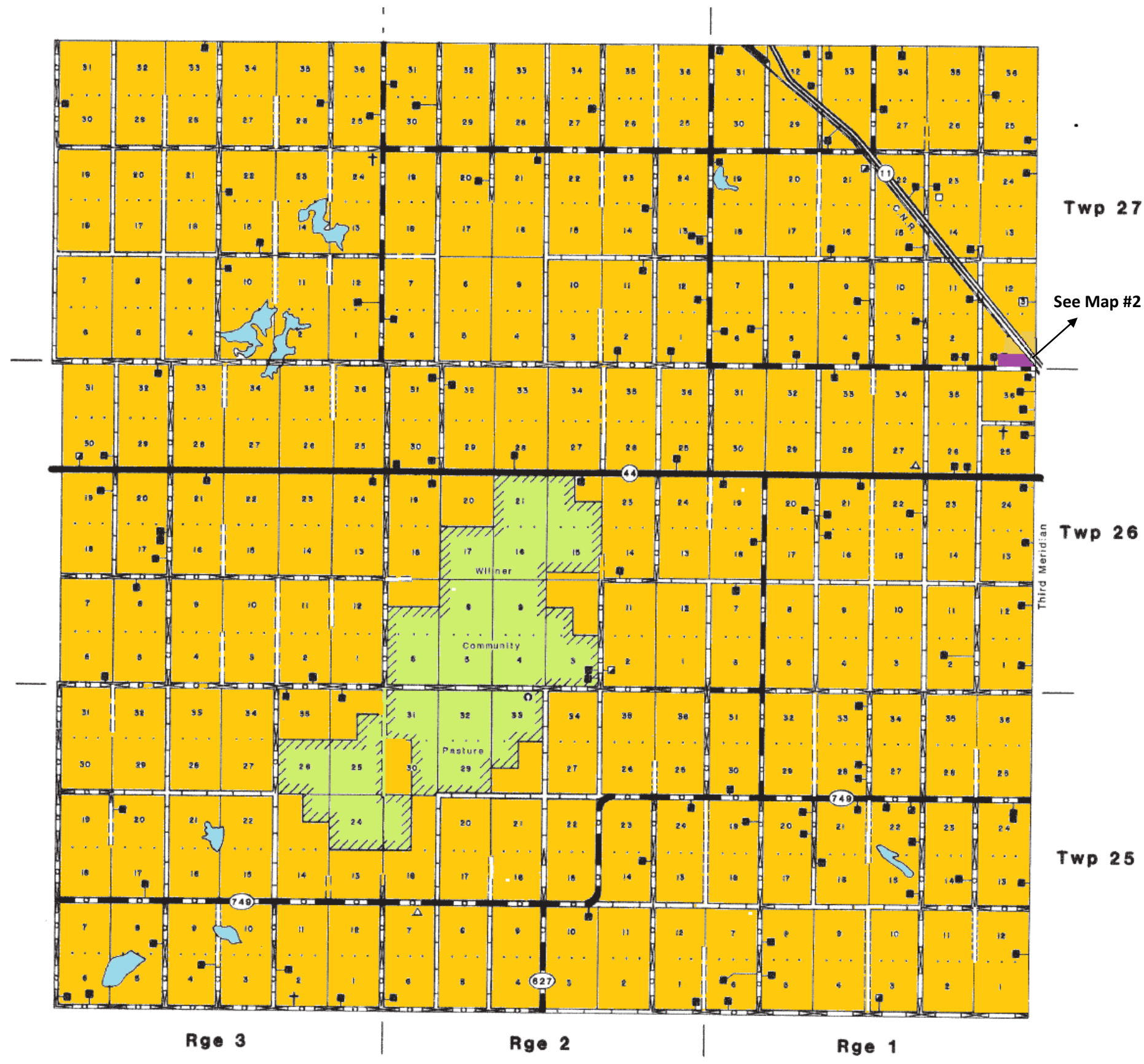
	Primary Grid Road
	Grid or Main Farm Access Road
	Graded and Drained Road
	Bladed and Undrained Road
	Prairie Trail
	Road Allowance-No Access
	Blind Line
	Railways

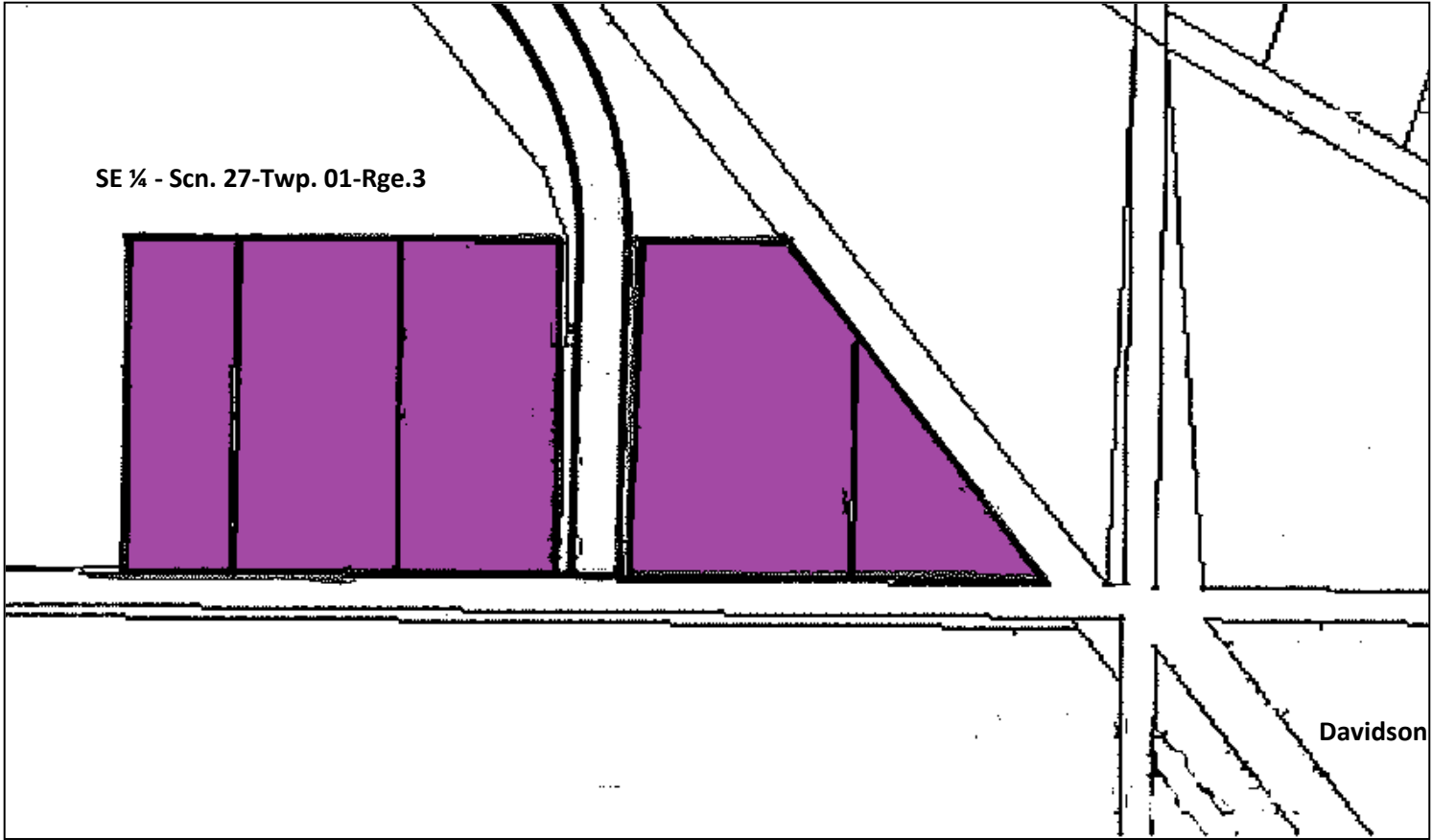
This is the Zoning Bylaw Map which accompanies Bylaw Number 02/2011 adopted by the Rural Municipality of Willner No. 253.

Administrator

(SEAL)

Reeve





Map #2: Country Residential District

Country Residential District

